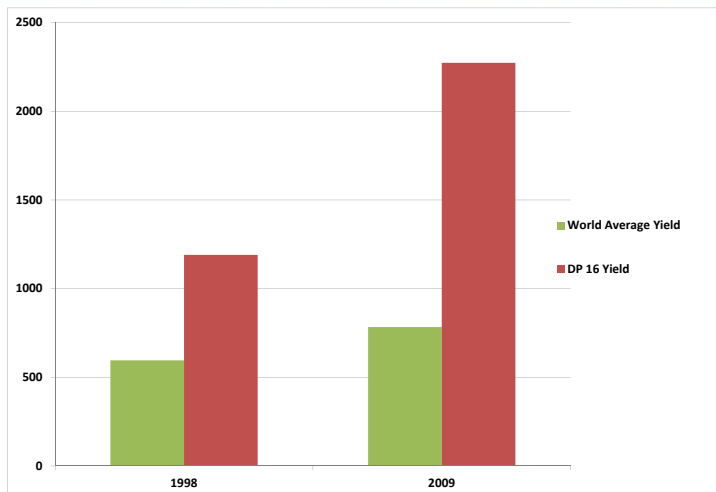


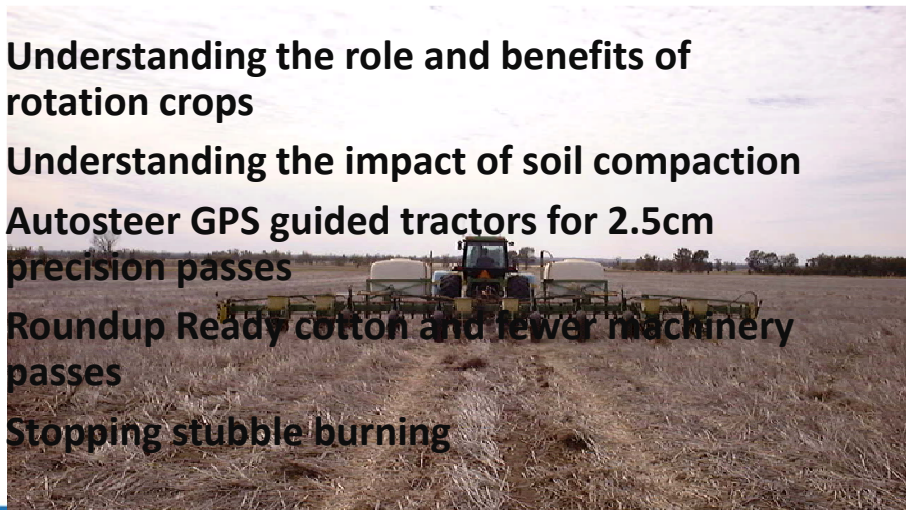
## The importance of management



## Where does high yield come from?

- Better adapted local, disease resistant varieties**
- Improved soil management**
- Improved water management**
- More effective pest control**

## Improving soil management




**Understanding the role and benefits of rotation crops**

**Understanding the impact of soil compaction**

**Autosteer GPS guided tractors for 2.5cm precision passes**

**Roundup Ready cotton and fewer machinery passes**

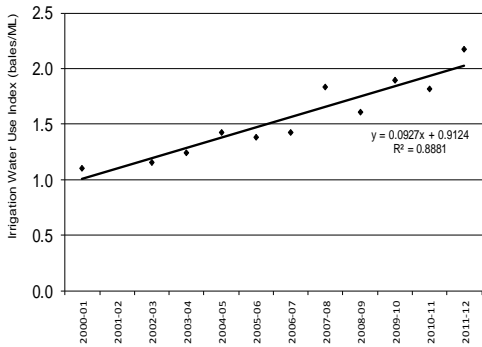
**Stopping stubble burning**

 Australian Government  
 Cotton Research and Development Corporation

[www.crdc.com.au](http://www.crdc.com.au)

## Improving irrigation management


**40 % increase in water productivity over past 10 years**



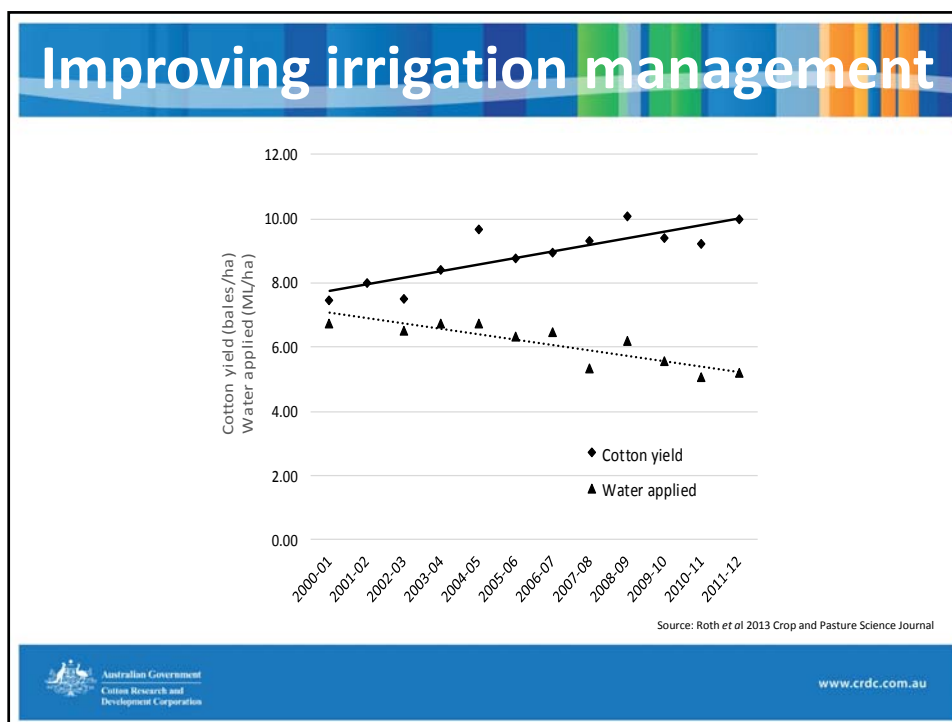
Year	Irrigation Water Use Index (bales/ML)
2000-01	1.05
2001-02	1.15
2002-03	1.25
2003-04	1.35
2004-05	1.45
2005-06	1.55
2006-07	1.65
2007-08	1.85
2008-09	1.75
2009-10	1.95
2010-11	1.85
2011-12	2.15

$y = 0.0927x + 0.9124$   
 $R^2 = 0.8881$

Source: Roth et al 2013 Crop and Pasture Science Journal


 Australian Government  
 Cotton Research and Development Corporation

[www.crdc.com.au](http://www.crdc.com.au)



## Improving irrigation management

**Increased focus given variability and cost**  
**Started paying more attention to detail, ways of reducing losses and inefficiencies**  
**IRRIMATE - Improved irrigation scheduling, and irrigation length**  
**Improve field conditions for more uniform irrigation**


www.crdc.com.au

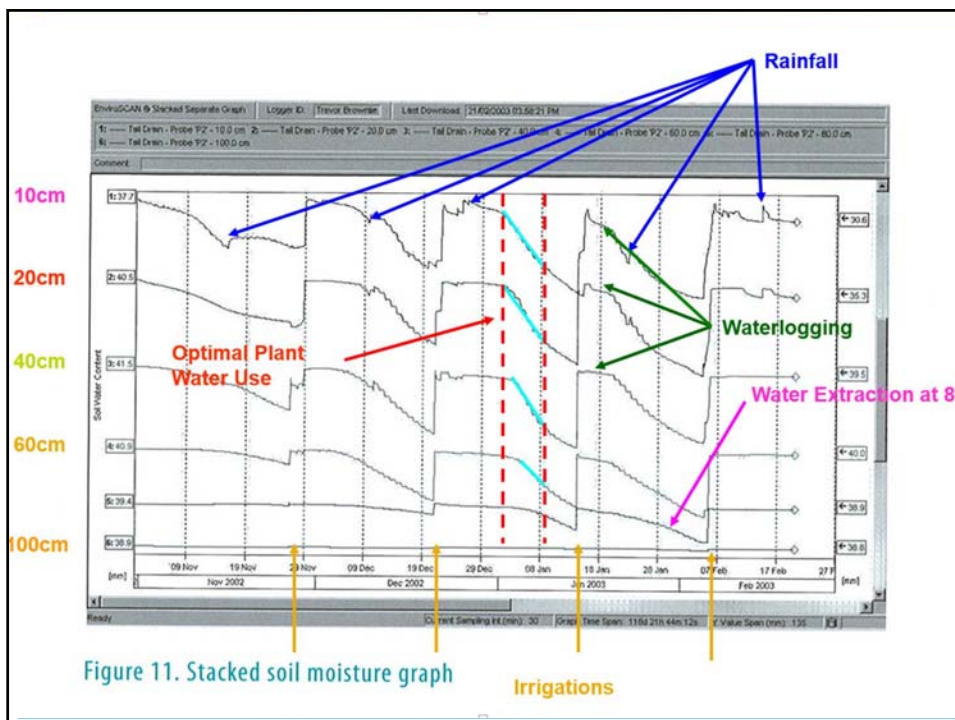
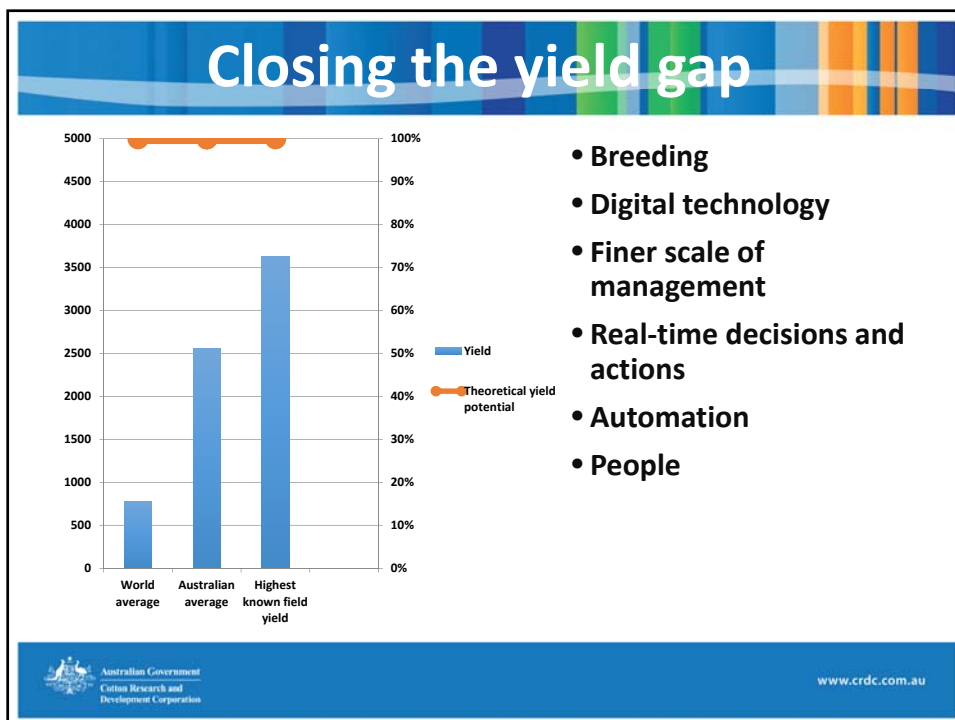
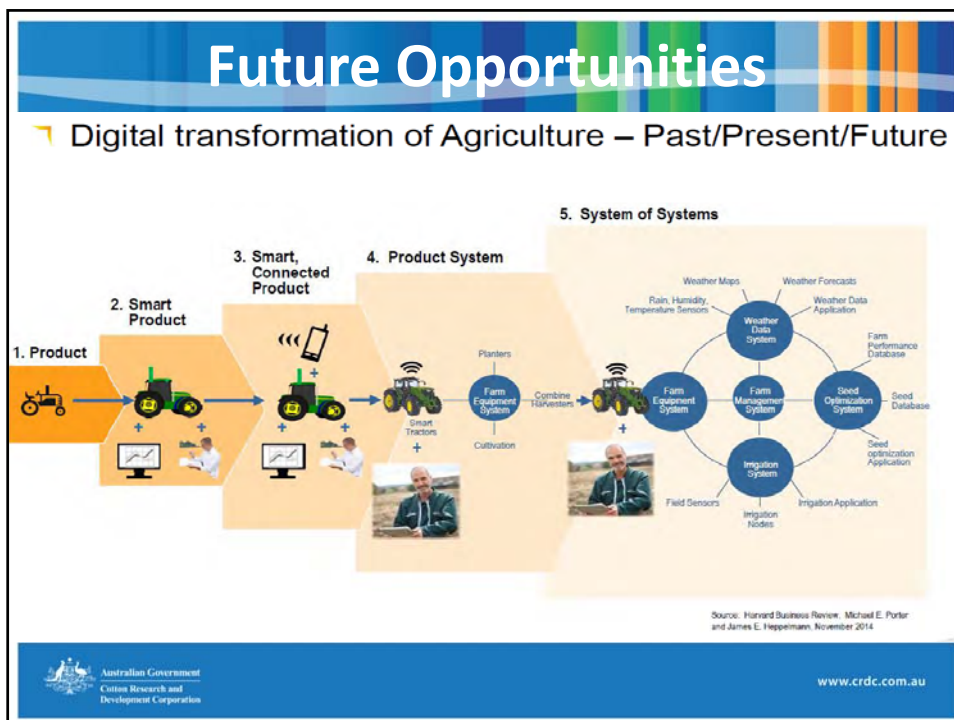


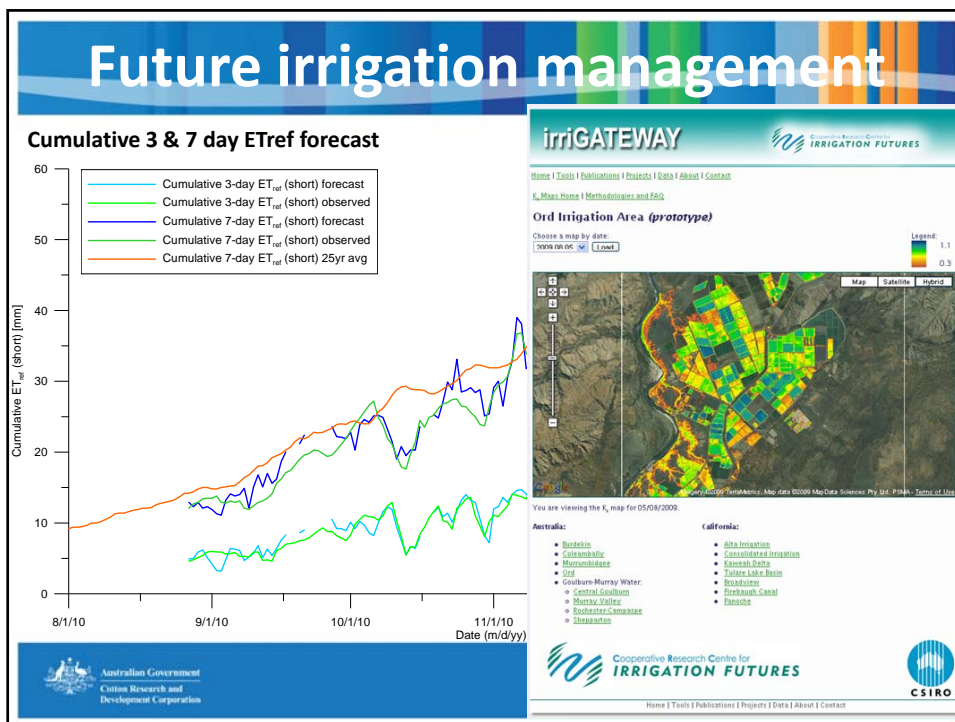
Figure 11. Stacked soil moisture graph

Irrigations









## Intensifying the scale of management

Can we learn and apply from performance management in elite sport?



## Building the capacity of people





## CRDC's Legislated Role

**Established as a statutory authority in 1990**

**Funded by a grower levy, matched by Government**

**Objectives include:**

- increasing the economic, environmental and social benefits to the cotton industry and to the community in general by **improving** the production, processing, storage, transport or **marketing of the products of primary industries**
- achieving the sustainable use and sustainable management of natural resources
- making more effective use of the resources and skills of the community in general and the scientific community in particular

